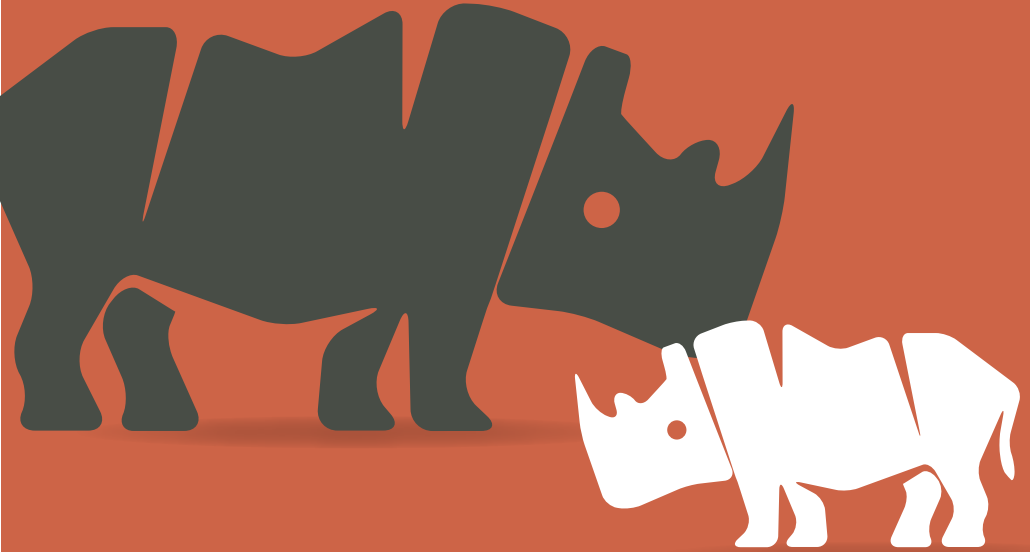


protect what you  
value the most

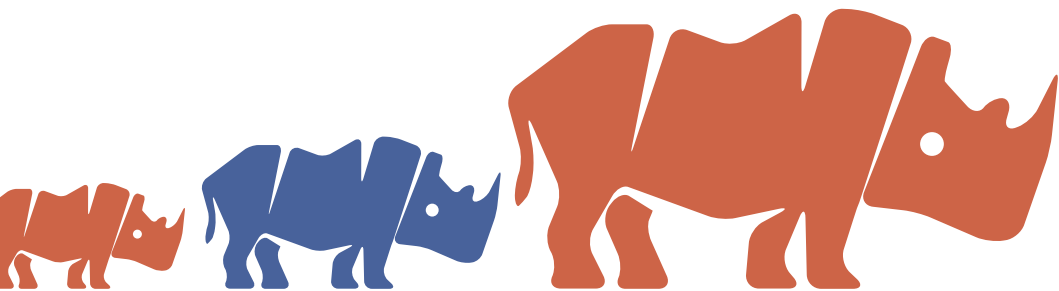


CTS 

SECURITY IS OUR STRENGTH

# Protect what you value most

Relax in the knowledge that what you value most is in safe hands with CTS. Protect and safeguard your family from intruders with a CTS monitored alarm and CCTV system.



# HOME SECURITY

Rest assured that your home, possessions and loved ones are always protected with an intruder detection system from CTS. We will fit an external warning system to the front of your house and provide 24-hour monitoring to ensure that your most precious asset, your home, is always safe.

# EMERGENCY ALERTS

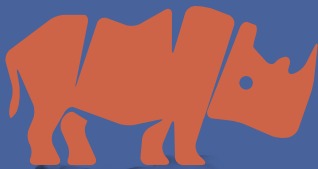
Get peace of mind and protection for your home with the CTS early detection and warning system from flood and water, smoke and fire, gas and carbon monoxide.





## CCTV

CTS can provide you with a CCTV system for your home, office or work premises. Remote dial in and viewing on your smart phone with the facility to switch on lights etc. and adapt settings that suit your lifestyle.



# COMMERCIAL

CTS will carry out a detailed on-site survey of your business premises in order to be able to offer you the correct technology at the right prices. We offer full design, consultation, installation and maintenance on intruder alarm, CCTV, access control and remote monitoring for all buildings.

## ADDITIONAL INFORMATION

CTS is fully licensed by the PSA (Private Security Authority) and offers high quality, nationwide security services for commercial and domestic buildings. PSA Licence No. 1799



CTS prides itself on its technical expertise, high standards, competitive rates and customer satisfaction

For a FREE demonstration and no obligation quote, call us today on 1850 425 276 or 051 567004

---

#### CONTACT DETAILS

CTS Tech  
CTS House  
Highfield Business Park  
Portlawn  
Co. Waterford

Tel: 1850 425 276  
Fax: 051 387941  
E: [info@ctstech.ie](mailto:info@ctstech.ie)  
[www.ctstech.ie](http://www.ctstech.ie)

---

Follow us on

facebook

**CTS** 

SECURITY IS OUR STRENGTH